

Application Note SEW Movitrac B and MOVITOOLS Motionstudio



This document guides you through the setup of proprietary vendor specific software installed on your PC. Your supervisor may provide you with additional or alternative instructions.

The document consists of standard instructions that may not fit your particular solution. Please visit our support website for latest revisions of documentation and firmware:

<http://www.secomea.com>

Version: 1.2, April 2015



Table of Contents

Prerequisites for This Guide	3
1. Ethernet Connection	4
2. Ethernet connection via Windows XP under VMWare	9
Notices	11

Prerequisites for This Guide

The following guide will assist you to setup a remote and online connection to the SEW equipment placed on the customer site using the MOVITOOLS Motionstudio Software.

This guide concentrates on a SEW Movitrac B Inverter with Ethernet, but may also work with other Ethernet enabled SEW devices.

Prerequisites for this guide are:

- You have an operational LinkManager installed on your PC with a LinkManager certificate that allows you to connect to the SiteManager agents.
- You have the SEW Inverter and the Motionstudio software installed.
You have an agent installed on the SiteManager with the IP address of the SEW Inverter and, and there is access between the SiteManager and the Inverter.

If this is not the case, we kindly ask you to contact the person / department responsible within your own company or at the company responsible hereof.

In the SiteManager, create an agent for the SEW Movidrive. Choose "SEW" -> "Inverter":

Status	Disable	S/N	Device Name	Device Type	Device IP & Parameters
IDLE	<input type="checkbox"/>	#72	SEW Movitrac B	SEW Inverter	172.24.2.207

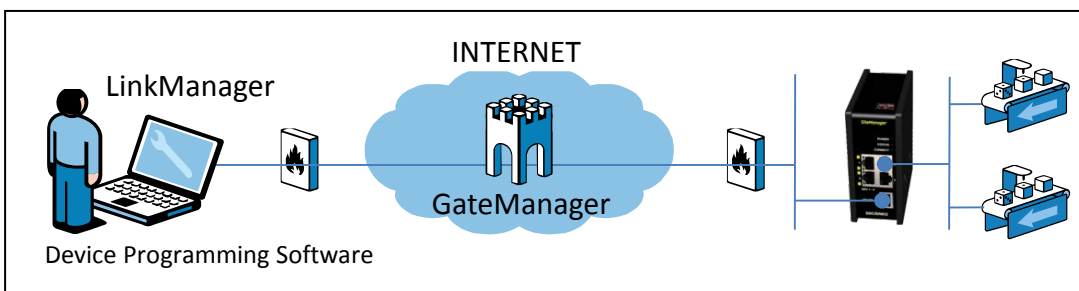
System Overview

The communication path is as follows:

Motionstudio → **LinkManager** → GateManager → SiteManager → Inverter.

This guide will elaborate on the components marked with **bold**.

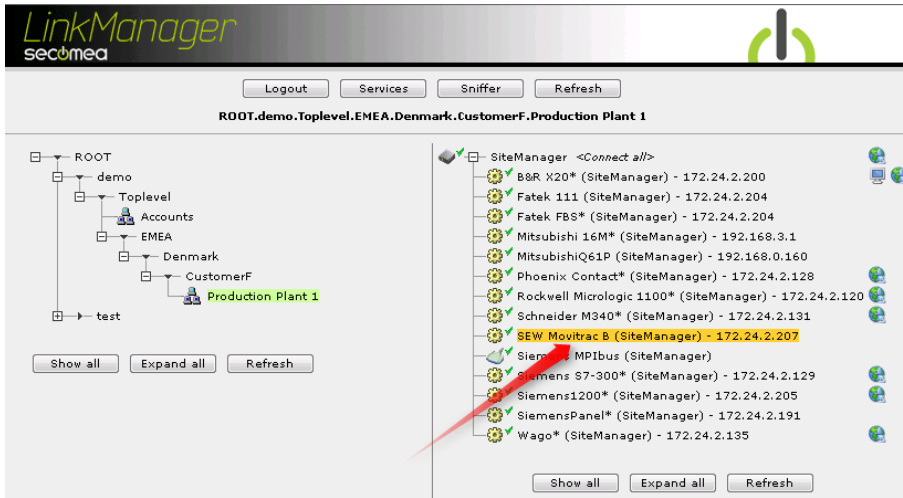
The following system overview depicts a SiteManager 3134 at the customer location.



The procedures in the following apply to any SiteManager model.

1. Ethernet Connection

1. Login with your LinkManager and locate the agent that represents your TCPI/IP attached Inverter. Click the text (that turns orange at mouse over) to connect to the Inverter.



2. You will not see any activity on it yet. This only starts when you connect to the Inverter via your project (Make a note of the IP address of the Inverter):

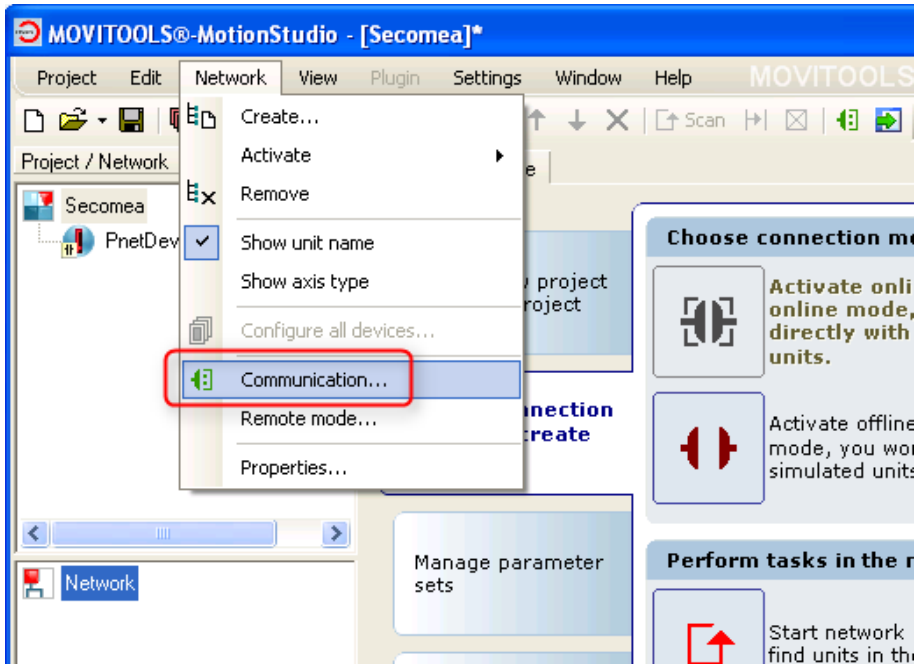


Hint: You are in principle now connected to the Inverter, and you could make a ping to the Inverter's IP address.

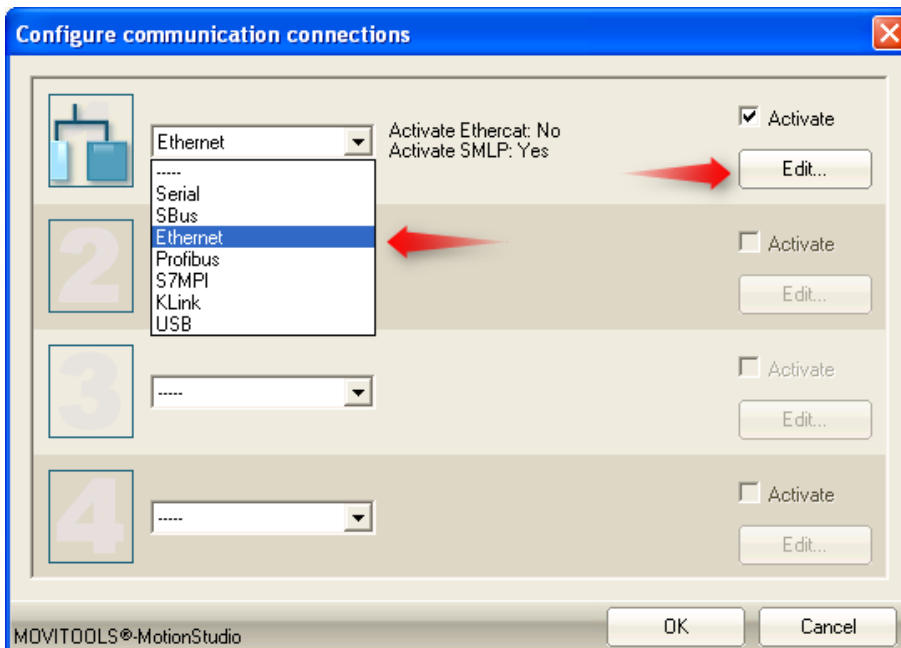
3. Start the MOVITOOLS Motionstudio and communicate on the IP address, as you would normally have done if you were sitting in the local network with the Inverter. The following illustrates some basic screenshots:

NOTE: The Motionstudio's network scan function will not work via the LinkManager connection without the IP address of Inverter being inserted as SMLP server. This is due to the UDP discovery from Motionstudio not being directed to available routes of the PC, but is done as a UDP broadcast (on 255.255.255.255). This is also explained in the following.

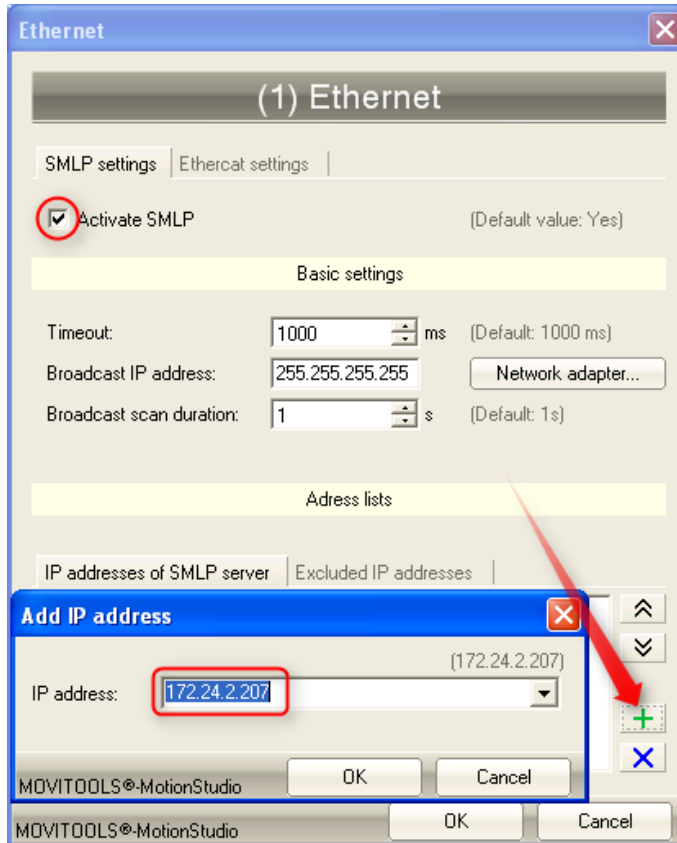
- Open your project, or create a new one, in Motionstudio and select **Network** → **Communication**.



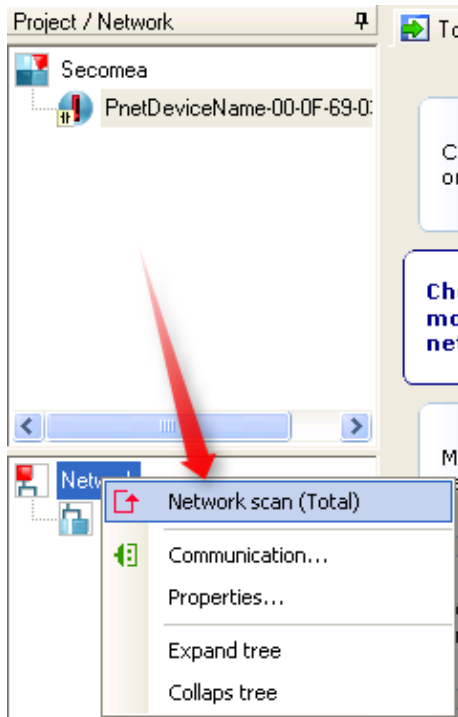
- Define an **Ethernet** connection and **Edit** it.



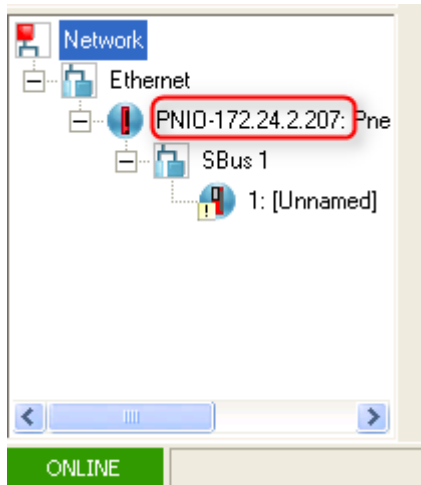
6. Make sure **Activate SMLP** is checked. Add a SMLP server IP address, and provide the IP address of the Inverter, and which you also connected to with the LinkManager:



7. Press **OK** twice, and right click **Network** and perform a **Network scan (Total)**



8. Motionstudio will now communicate with the Inverter via the LinkManager:



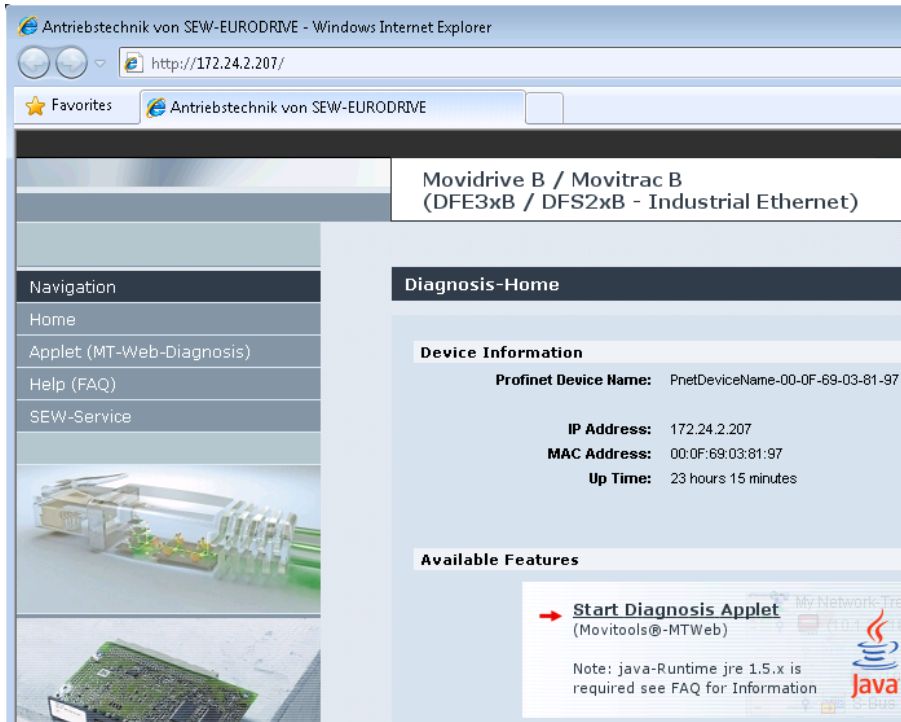
9. You can now observe traffic on the LinkManager



10. You can also try to click the globe icon.



11. This will start your default web browser connected to the Inverter:



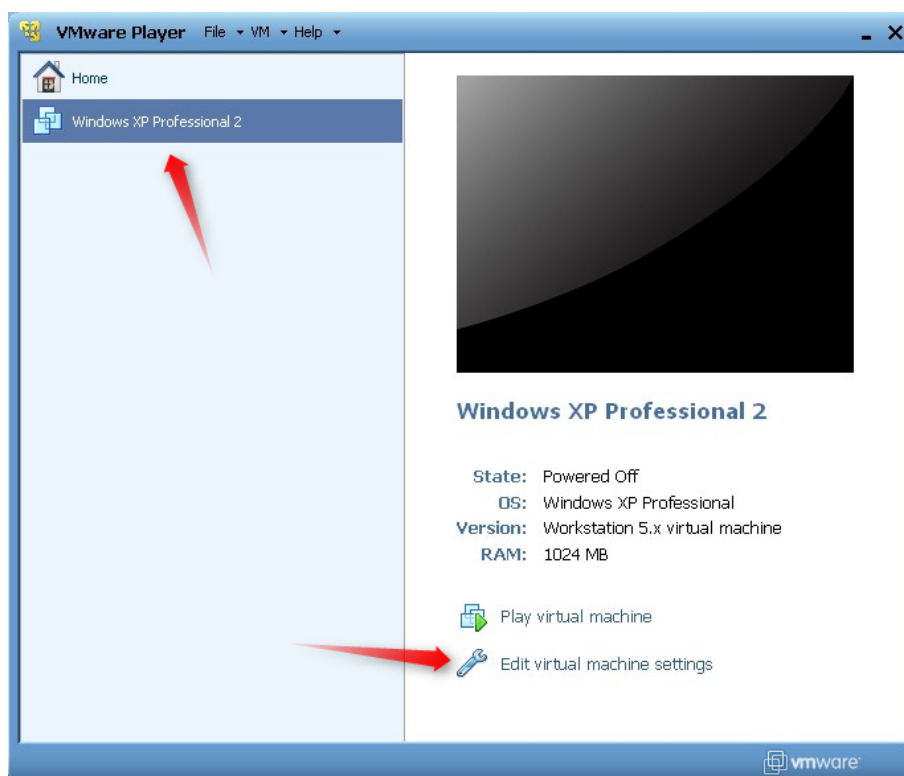
2. Ethernet connection via Windows XP under VMWare

You can run the Motionstudio software inside a VMWare engine, to an Inverter that is Ethernet attached to a SiteManager.

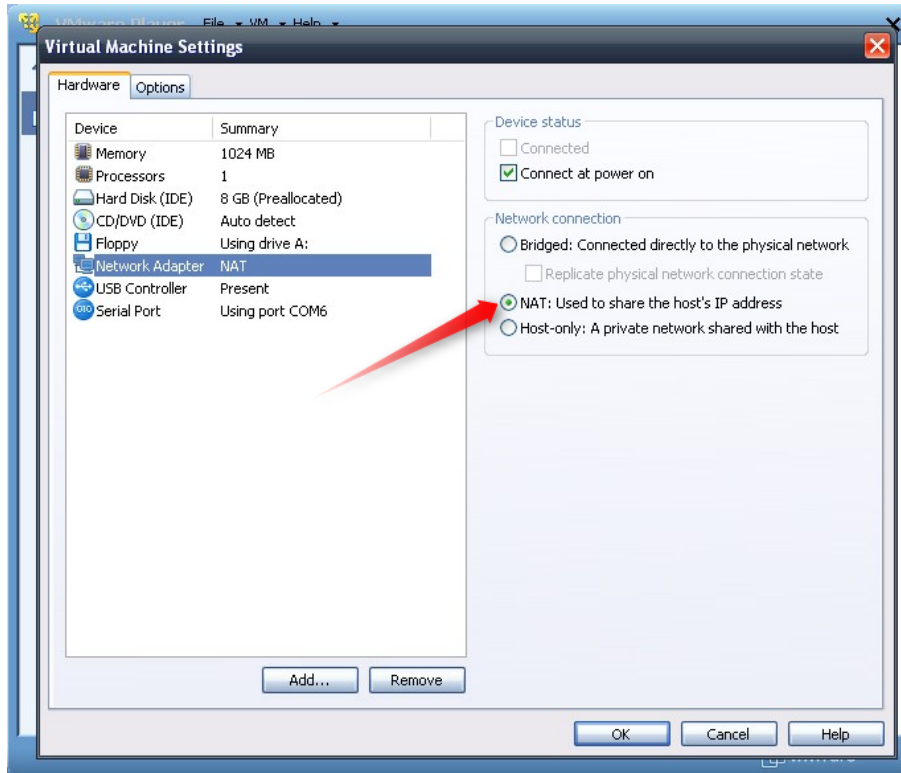
Note: LinkManager must be installed on the hosting machine, and NOT inside the VMWare Windows XP image. LinkManager cannot run inside a VMWare virtual machine.

The following illustrates VMWare Player, which can be downloaded from <http://www.vmware.com/support/product-support/player/>

1. Locate your Windows XP that has Motionstudio installed, and enter **Edit virtual machine settings**.



2. Make sure the Network Adapter settings is set to **NAT**:



3. Start the VMWare engine and on the host PC start LinkManager.
4. Follow the procedure of section 1. Ethernet **Connection** to get access to the Inverter via LinkManager

Notices

Publication and copyright

© **Copyright Secomea A/S 2011-2015**. All rights reserved. You may download and print a copy for your own use. As a high-level administrator, you may use whatever you like from contents of this document to create your own instructions for deploying our products. Otherwise, no part of this document may be copied or reproduced in any way, without the written consent of Secomea A/S. We would appreciate getting a copy of the material you produce in order to make our own material better and – if you give us permission – to inspire other users.

Trademarks

SiteManager™, LinkManager™ and GateManager™ are trademarks of Secomea A/S. Other trademarks are the property of their respective owners.

Disclaimer

Secomea A/S reserves the right to make changes to this publication and to the products described herein without notice. The publication of this document does not represent a commitment on the part of Secomea A/S. Considerable effort has been made to ensure that this publication is free of inaccuracies and omissions but we cannot guarantee that there are none.

The following paragraph does not apply to any country or state where such provisions are inconsistent with local law:

SECOMEA A/S PROVIDES THIS PUBLICATION "AS IS" WITHOUT WARRANTY OF ANY KIND, EITHER EXPRESS OR IMPLIED, INCLUDING, BUT NOT LIMITED TO, THE IMPLIED WARRANTIES OF MERCHANTABILITY OR FITNESS FOR A PARTICULAR PURPOSE

SECOMEA A/S SHALL NOT BE LIABLE FOR ANY DIRECT, INDIRECT, INCIDENTAL, CONSEQUENTIAL, OR OTHER DAMAGE ALLEGED IN CONNECTION WITH THE FURNISHING OR USE OF THIS INFORMATION.

Secomea A/S
Denmark

CVR No. DK 31 36 60 38

E-mail: sales@secomea.com
www.secomea.com