

Application Note: Accessing web devices running Unsigned or Self-signed Java applets (from Java 7 update 51)



Starting with Java 7 Update 51, Oracle has enhanced their Java security model to make user systems less vulnerable to external exploits.

The new version of Java does not allow users to run applications that are not signed, Self signed (not signed by trusted authority) or applications that are missing permission attributes.

It is likely that older Java applets are not compliant with the security guidelines implemented in Java 7 Update 51

This guide explains about the issue, and possible work-arounds.

Version: 1.0, January 2014



Table of Contents

| | | |
|------|---|----------|
| 1. | General Consequence to the to the Secomea solution | 3 |
| 2. | LOCAL access to Java enabled Web devices | 3 |
| 2.1. | OPTION 1, Signing the Java applet | 3 |
| 2.2. | OPTION 2, Adjusting the Java Security Level to Medium | 4 |
| 2.3. | OPTION 3, Adding the device IP to the Exception list | 5 |
| 3. | REMOTE access to Java enabled Web devices | 6 |
| 3.1. | Access from LinkManager <u>after</u> device Connect | 6 |
| 3.2. | Access from LinkManager <u>before</u> device Connect | 6 |
| 3.3. | Access from LinkManager Mobile | 7 |
| | Notices | 8 |

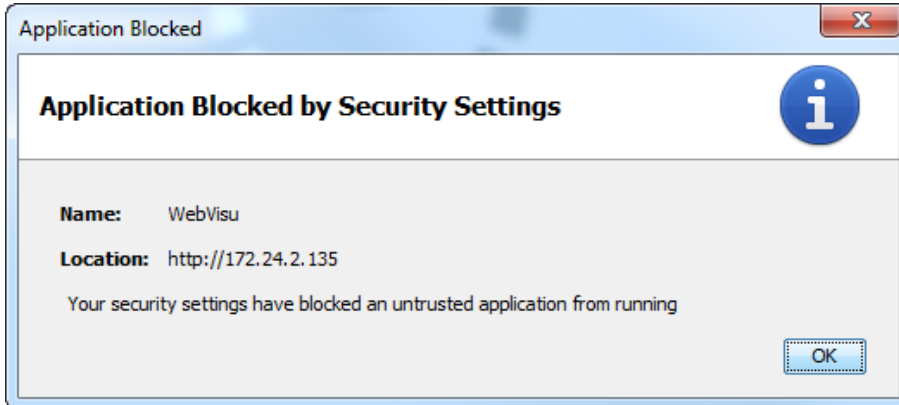
1. General Consequence to the to the Secomea solution

The Secomea solution is NOT based on Java.

The GateManager Portal, SiteManager, LinkManager or LinkManager Mobile will not be affected by this security update from Oracle.

2. LOCAL access to Java enabled Web devices

The security add-on will affect 3 part products like a PLC with a build in WEB server that is using a Java applet that is not signed or self signed – this will usually result in this error:



The following options exist for resolving this issue:

- 1) Signing the Java applet.
- 2) Set Java Security Level to Medium (Temporary solution!)
- 3) Add the device IP to the Exception list
- 4) Downgrade Java to Update 45 (Not recommended!)

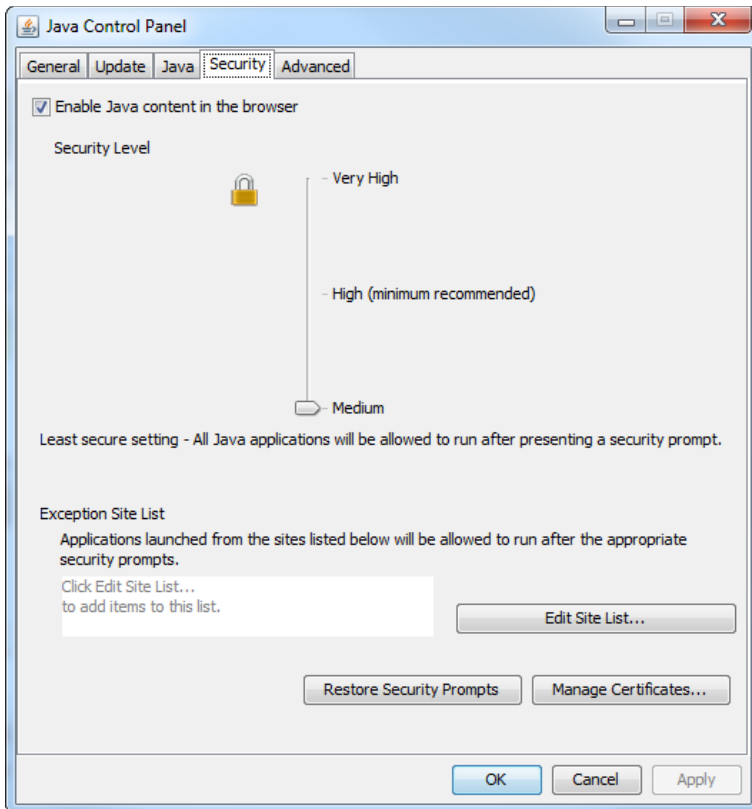
2.1. OPTION 1, Signing the Java applet

You will need to contact the vendor of the device for a software update containing the Java applet in a signed version.

If that does not exist, it is in yours and the vendors to let them know about the application being blocked. Refer to this link:

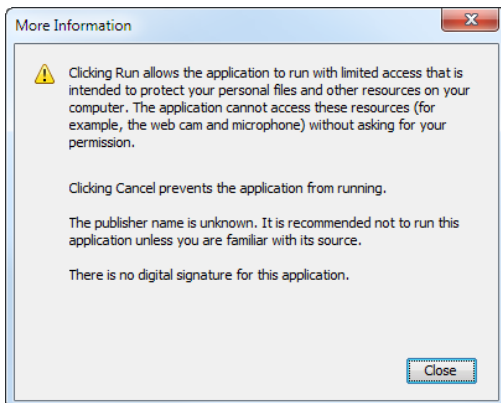
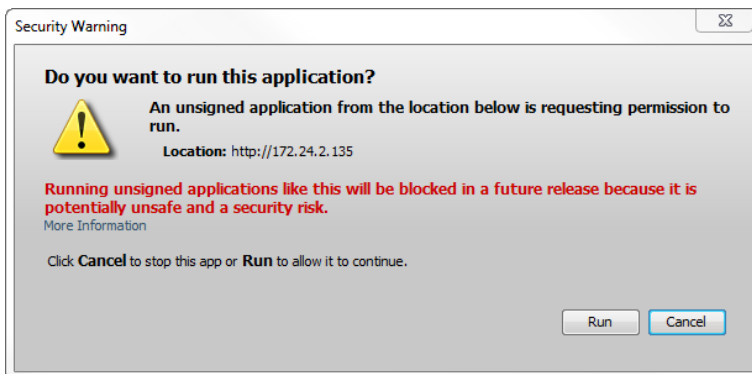
http://www.java.com/en/download/help/java_blocked.xml

2.2. OPTION 2, Adjusting the Java Security Level to Medium



If Security is set to Medium, you will get a warning, but can **Run** the application.

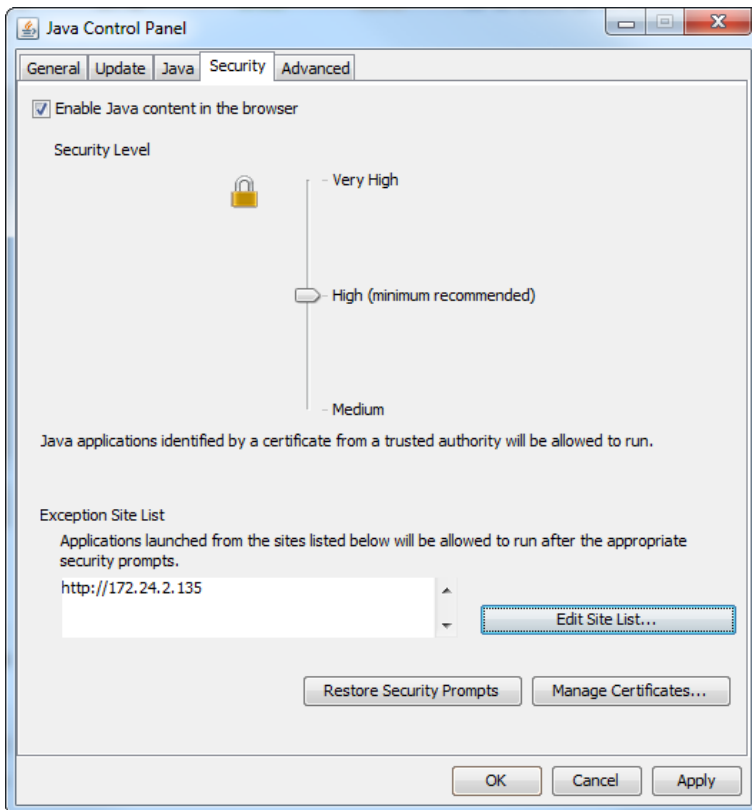
As the warning indicates, this may not be recommended as a permanent solution. Oracle warns that this may be blocked in a future Java update.



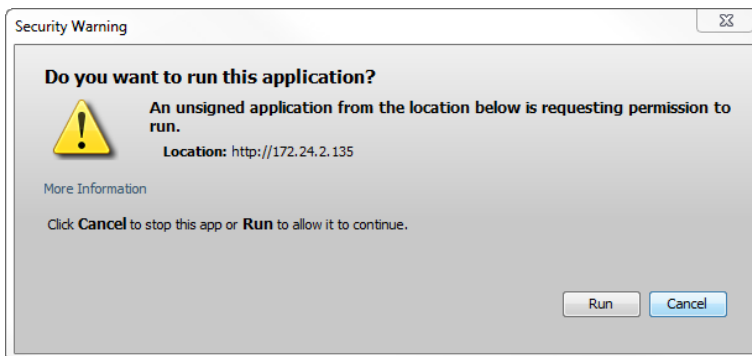
2.3. OPTION 3, Adding the device IP to the Exception list

For details refer to:

http://docs.oracle.com/javase/7/docs/technotes/guides/jweb/exception_site_list.html



If Security is High and the IP address (172.24.2.135) is added to the Exception Site List, you will still get a warning prompt and can press Run.



3. REMOTE access to Java enabled Web devices

3.1. Access from LinkManager after device Connect

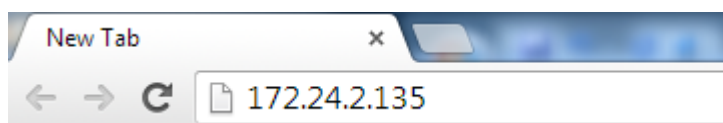
Prerequisite: The device IP must be accessible as if you Windows PC was Locally connected to it, ref. one of the three OPTIONS described above.

Connecting to a device using LinkManager and subsequent using the Globe icon in the Connected window, will launch the Java applet the exact same way as if your PC was locally attached to the network of the device.

When connected either click the Globe icon



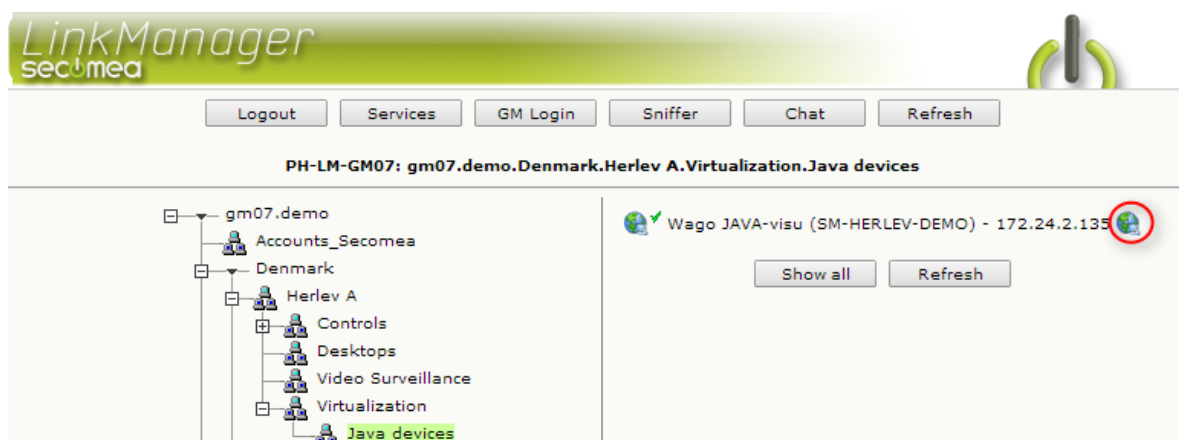
Or type the IP address of the device in your web browser address bar:



3.2. Access from LinkManager before device Connect

Prerequisite: The Java applet must be signed ref. OPTION 1, or Security level must be decreased ref. OPTION 2.

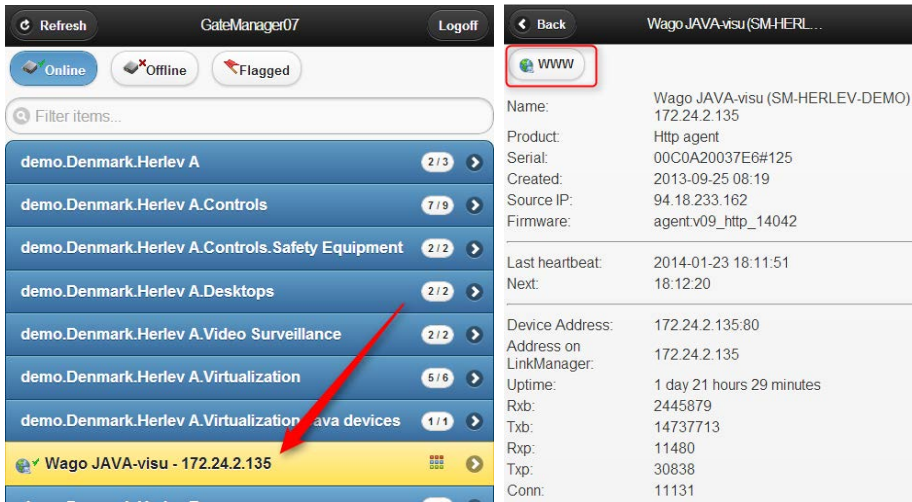
The LinkManager allow for connecting to web enabled devices without making a full connection to the device. This method uses a dynamic port number that cannot be added to the Java exception list.



3.3. Access from LinkManager Mobile

Prerequisite: The Java applet must be signed ref. OPTION 1, or Security level must be decreased ref. OPTION 2.

The LinkManager Mobile uses a dynamic port number that cannot be added to the Java exception list.



Notices

Publication and copyright

© **Copyright Secomea A/S 2014**. All rights reserved. You may download and print a copy for your own use. As a high-level administrator, you may use whatever you like from contents of this document to create your own instructions for deploying our products. Otherwise, no part of this document may be copied or reproduced in any way, without the written consent of Secomea A/S. We would appreciate getting a copy of the material you produce in order to make our own material better and – if you give us permission – to inspire other users.

Trademarks

SiteManager™, LinkManager™ and GateManager™ are trademarks of Secomea A/S. Other trademarks are the property of their respective owners.

Disclaimer

Secomea A/S reserves the right to make changes to this publication and to the products described herein without notice. The publication of this document does not represent a commitment on the part of Secomea A/S. Considerable effort has been made to ensure that this publication is free of inaccuracies and omissions but we cannot guarantee that there are none.

The following paragraph does not apply to any country or state where such provisions are inconsistent with local law:

SECOMEA A/S PROVIDES THIS PUBLICATION "AS IS" WITHOUT WARRANTY OF ANY KIND, EITHER EXPRESS OR IMPLIED, INCLUDING, BUT NOT LIMITED TO, THE IMPLIED WARRANTIES OF MERCHANTABILITY OR FITNESS FOR A PARTICULAR PURPOSE

SECOMEA A/S SHALL NOT BE LIABLE FOR ANY DIRECT, INDIRECT, INCIDENTAL, CONSEQUENTIAL, OR OTHER DAMAGE ALLEGED IN CONNECTION WITH THE FURNISHING OR USE OF THIS INFORMATION.