

SiteManager Working with Subnet Agents



This guide explains how to setup Subnet Agents on a SiteManager and also talks about pros and cons of these compared to the Vendor-specific Device Agents.

Version: 2.0, June 2016

Applicable to SiteManager version 7.0 or newer



Table of Contents

Version History	2
<hr/>	
1. Introduction - What is a Subnet Agent?	3
<hr/>	
2. Subnet Agent (SiteManager 3xxx / SM-E Extended only)	3
2.1. Advantage of Subnet Agent vs regular Ethernet Agents	3
2.2. Disadvantages of Subnet Agent vs regular Ethernet Agents	3
2.3. Using the Subnet Agent	4
3. Auto Subnet agent (SiteManager hardware models only)	5
<hr/>	
3.1. Advantages of Auto Subnet Agent vs Subnet Agent	5
3.2. Disadvantages of Auto Subnet Agent vs Subnet Agent	5
3.3. Using Auto Subnet Agent (only)	6
3.4. Using Auto Subnet Agent together with Regular Agents	7
4. Reasons for starting Subnet Agent together with Regular Agents	8
<hr/>	
Notices	9

Version History

- 1.2 First official version, only including Auto-Subnet Agent referred to as "Subnet Agent" (document title: *Setting up Tunnel Agent on a SiteManager Auto Subnet Agent*)
- 2.0 - Revised according to release 7.0 Introducing the GENERIC > Subnet Agent. Changed document title to "Working with Subnet Agents"

1. Introduction - What is a Subnet Agent?

A Subnet Agent will provide access for a LinkManager to a range of IP addresses defined by a “subnet”, rather than individual addresses as defined by e.g. Vendor-specific Device Agents.

It is a well-known fact that the Secomea remote access solution is not based on VPN and routing.

Therefore, you will not find the terminology “Tunnel Agent” in the SiteManager, but rather “Subnet Agent”, although the result may be similar to a tunneled VPN connection to entire subnets of a local network.

2. Subnet Agent (SiteManager 3xxx / SM-E Extended only)

2.1. Advantage of Subnet Agent vs regular Ethernet Agents

1. The Subnet Agent provides access to the entire network of a Network Interface port, and only consumes a single Agent on the SiteManager.
2. You do not have to configure dedicated agents for all devices in the network.
3. The Subnet Agent can be configured for smaller subnets, masking out the SiteManager web GUI.

2.2. Disadvantages of Subnet Agent vs regular Ethernet Agents

1. Supported only on SiteManager 3xxx models and SiteManager Embedded Extended. For SiteManager 1xxx you only have the option to use the Auto Subnet agent (see section 3)
2. The Subnet Agent will not provide access to Ethernet equipment using certain search protocols (UDP multicast is not supported but Subnet Broadcast is), or certain special protocols (such as Beckhoff AMS). Also FTP Active mode can have limitations.
3. The Subnet Agent does not provide access from LinkManager Mobile.
4. Vendor-specific Device Agents limit access to a specific device. With the Subnet Agent, all LinkManager users will have access to all IP devices and their services of the entire subnet, which may not be desirable security wise.
5. Configuring IP subnets properly does require some network knowledge.
6. The Subnet Agent assumes the LinkManager user to remember the IP addresses of all devices; there will be no indication in the LinkManager about which devices actually exists in the device network.
7. You will not be able to point and click to connect to a device with the “Go To Device” feature. The LinkManager user must manually start e.g. a web browser or a VNC session towards the device.
8. The status of a particular device is neither shown in the LinkManager nor the GateManager console. You will only find out if it is available when you attempt to connect to it.
9. When using the Subnet Agent to access devices, you will not be able to create Alerts on the device status on the GateManager.
10. The Access Log on the GateManager will not indicate which specific devices a LinkManager user has accessed using the Subnet Agent.

2.3. Using the Subnet Agent

Select the Device Type **GENERIC > Subnet agent**

GateManager Agents

Using 1 of 25 agents

Status	Disable	S/N	Device Name	Device Type	Device IP & Parameters	EasyLog	Comment
new:	<input type="checkbox"/>	#00	DEV port 1	GENERIC	Subnet		

Refresh Save New Search SNMP >>

"DEV port 1" - GENERIC Subnet Agent

This agent enables traffic between LinkManager and all Devices in a subnet of IP addresses.

By default, all TCP ports (and no UDP ports) are forwarded from LinkManager to the devices, but below you can specify which TCP and UDP ports are to be forwarded. Optionally, you can also specify the TCP and UDP Server ports (on the SiteManager's DEV interface), which are forwarded from the device back to the LinkManager.

Note: To facilitate Active FTP from LinkManager, specify "*" (all ports) in "TCP Server ports".

Note: If you specify any "UDP Server ports" below, and you want the LinkManager PC to respond back to the device, you must specify the device's source ports in the "UDP Device Ports" field. Unless the device uses a known fixed source port, just specify a "*" in "UDP Device Ports".

Device Subnet/Mask: * 10.0.0.1/24

TCP Device Ports:

UDP Device Ports:

Enable UDP Broadcast to Devices:

TCP Server Ports:

UDP Server Ports:

Enable UDP Broadcast from Devices:

Custom Settings:

Save Back Ping

* = Mandatory field

Some useful notes about this screen:

The subnet mask is written by the notation /xx. E.g. a standard Class C network is written as e.g. 10.0.0.0/24, and provides access to the IP range 10.0.0.0-10.0.0.255.

Within the DEV network you can limit (divide) the Subnet Agent to specific IP ranges like: 10.0.0.16/29, which provides access to the addresses 10.0.0.16-10.0.0.23 only.

One Subnet Agent will have to be created for each Network interface port, IP mask must match the port, you cannot "Supernet" IP ranges. Although creating smaller subnets are allowed.

You can configure multiple Subnet Agents that can be accessed individually or grouped (see online help for more information on Device Groups).

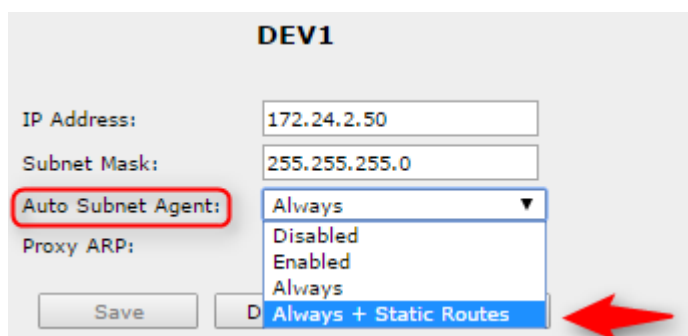
By default, all TCP ports are open for the selected subnet from LinkManager to the devices. You can narrow the services to access by specifying single ports or ranges like this: **23,80,5000-5010**.

Refer to the help text in the configuration screen for details on more specific setup with regards to UDP broadcasts. Note that this may require more detailed knowledge of the specific protocols, and you should consider if a dedicated Agent wouldn't be a better choice.

3. Auto Subnet agent (SiteManager hardware models only)

3.1. Advantages of Auto Subnet Agent vs Subnet Agent

1. It works for all SiteManager hardware models including the 1xxx series.
2. It works for SiteManagers with firmware older than 7.0.
3. It is default active on a virgin SiteManager HW model, which means no Agent configuration is needed for connecting to the DEV network with a LinkManager.
4. In addition to access to the subnet of the DEV port, the Auto Subnet Agent can be configured to enable forwarding to the subnets specified in Static Routes (menu Routing > Static Routes), which have a gateway on DEV port.



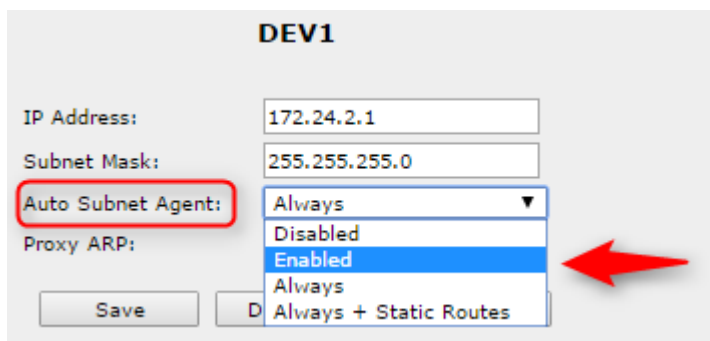
3.2. Disadvantages of Auto Subnet Agent vs Subnet Agent

1. The Auto Subnet Agent will not show as an agent in the LinkManager. The Auto Subnet Agent is started by selecting <Connect all> on the SiteManager itself, thus requiring the LinkManager user to have access to the SiteManager, and subsequently the user will also have access to the web GUI of the SiteManager.
2. The Auto Subnet Agent can be combined with Vendor-specific Device Agents, but since the Subnet Agent can only be started by selecting <Connect all>, it will also start all the Vendor-specific Device Agents (including Serial and USB agents) and potentially prevent other LinkManager user's access to specific equipment.
3. You only have one Auto Subnet Agent, while the Regular Subnet Agents can define smaller subnets and the different Subnet Agents can be organized into domains on the GateManager for differentiated LinkManager access.
4. The Auto Subnet Agent does not allow for specifying TCP/UDP ports but will always open for access to all services on all devices in the subnet.
5. The Auto Subnet Agent does not allow specifying a Subnet Mask for limiting the IP range within the DEV network.

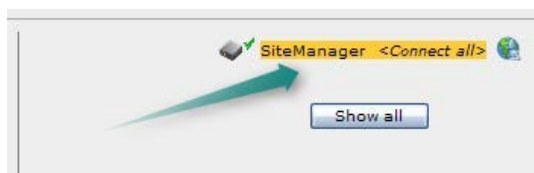
3.3. Using Auto Subnet Agent (only)

By default, (before any specific agents are configured) clicking on a SiteManager Hardware model (<Connect all>) in the LinkManager will activate the Auto-subnet agent, due the "Auto Subnet Agent" default value being "Enabled".

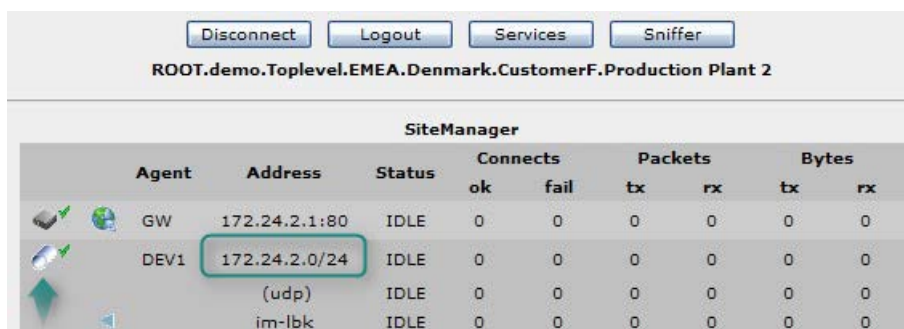
1. Enter the SiteManager web GUI and select System → DEV(1). Ensure that the Auto Subnet Agent is set to **Enabled**:



2. Make sure that there are no Agents defined, or that any defined agents are Disabled under menu GateManager → Agents (otherwise the Subnet Agent will not start).
3. Locate the SiteManager in the LinkManager, and select <Connect all>:



4. You will notice the tunnel icon, and the subnet that is made available to the PC of the LinkManager.



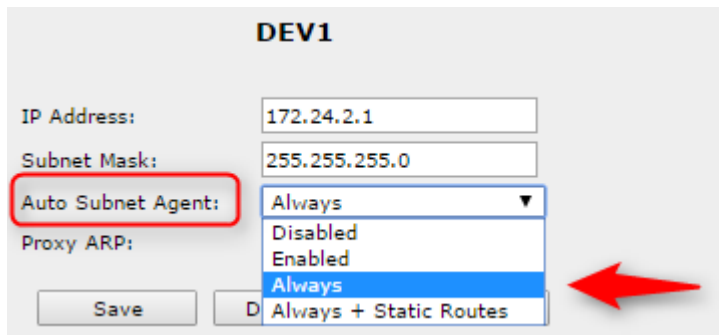
SiteManager									
Agent	Address	Status	Connects		Packets		Bytes		
			ok	fail	tx	rx	tx	rx	
GW	172.24.2.1:80	IDLE	0	0	0	0	0	0	
DEV1	172.24.2.0/24	IDLE	0	0	0	0	0	0	
	(udp)	IDLE	0	0	0	0	0	0	
	im-lbk	IDLE	0	0	0	0	0	0	

In this case the address is indicated as 172.24.2.0/24, which is the official notation of a subnet of 254 hosts (also indicated with the subnet mask 255.255.255.0 aka Class C network)

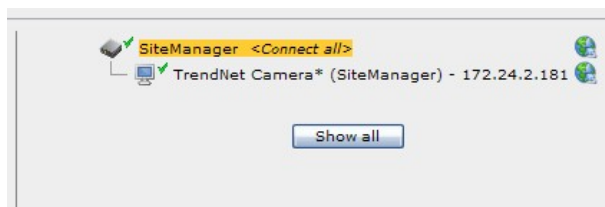
5. If you know an IP address in the subnet, you can try to ping it.

3.4. Using Auto Subnet Agent together with Regular Agents

1. If you want to use the Subnet Agent combined with Vendor-specific Device Agents, you will need to set the Auto Subnet Agent to **Always** or **Always + Static Routes** (Check the SiteManager online help for more info on the latter option).



2. Locate the SiteManager in the LinkManager, and select <Connect all>:



3. You will notice that both the Subnet Agent and the other Agents are connected simultaneously.

The screenshot shows the SiteManager interface with a table of agents. The table has columns for Agent, Address, Status, Connects (ok, fail), Packets (tx, rx), and Bytes (tx, rx). The 'TrendNet Camera*' agent is highlighted with a green box.

SiteManager									
Agent	Address	Status	Connects		Packets		Bytes		
			ok	fail	tx	rx	tx	rx	
GW	172.24.2.1:80	IDLE	0	0	0	0	0	0	
TrendNet Camera*	172.24.2.181:80	IDLE	0	0	0	0	0	0	
DEV4	10.100.100.0/24	IDLE	0	0	0	0	0	0	
	(udp)	IDLE	0	0	0	0	0	0	
	im-lbk	IDLE	0	0	0	0	0	0	

4. Reasons for starting Subnet Agent together with Regular Agents

You can start a Subnet Agent together with e.g. Vendor-specific Device Agents by configuring a Device Group including the Subnet Agent and the relevant regular agents (Check the SiteManager online help for more info on Device Groups).

An Auto Subnet Agent will, when configured to “Always” (see previous section) and choosing <Connect All>, automatically start all agents including itself.

There may be the following reasons for starting Vendor-specific Device Agents together with the Subnet Agent:

- You may have a requirement to access more IP addresses in the DEV network that you have free agents for. As described in section 2.2, there are services that require a Vendor-specific Device Agent. If you have a single or a few devices in the DEV network that require such specific services, you can create Vendor-specific Device Agents for the IP addresses of these, and leave other devices to be accessed by normal Subnet Agent communication. When activating the Auto Subnet agent by <Connect All> or starting a group of agents including a Subnet Agent and one or more Vendor-specific Device Agents, the Vendor-specific Device Agents will take precedence over Subnet Agent communication. So devices being associated with the Vendor-specific Device Agents will be supported by the special services of these agents.
- You may want to connect to the subnets in the DEV network, while concurrently connecting to one or more devices on the Uplink side. Such devices could be a SCADA system or similar that typically are located on the corporate network.

Notices

Publication and Copyright

© **Copyright Secomea A/S 2011-2016**. All rights reserved. You may download and print a copy for your own use. As a high-level administrator, you may use whatever you like from contents of this document to create your own instructions for deploying our products. Otherwise, no part of this document may be copied or reproduced in any way, without the written consent of Secomea A/S. We would appreciate getting a copy of the material you produce in order to make our own material better and – if you give us permission – to inspire other users.

Trademarks

LinkManager™, GateManager™ and SiteManager™ are trademarks of Secomea A/S. Other trademarks are the property of their respective owners.

Disclaimer

Secomea A/S reserves the right to make changes to this publication and to the products described herein without notice. The publication of this document does not represent a commitment on the part of Secomea A/S. Considerable effort has been made to ensure that this publication is free of inaccuracies and omissions but we cannot guarantee that there are none.

The following paragraph does not apply to any country or state where such provisions are inconsistent with local law:

SECOMEA A/S PROVIDES THIS PUBLICATION "AS IS" WITHOUT WARRANTY OF ANY KIND, EITHER EXPRESS OR IMPLIED, INCLUDING, BUT NOT LIMITED TO, THE IMPLIED WARRANTIES OF MERCHANTABILITY OR FITNESS FOR A PARTICULAR PURPOSE

SECOMEA A/S SHALL NOT BE LIABLE FOR ANY DIRECT, INDIRECT, INCIDENTAL, CONSEQUENTIAL, OR OTHER DAMAGE ALLEGED IN CONNECTION WITH THE FURNISHING OR USE OF THIS INFORMATION.