

# Application Note Bihl+Wiedemann and ASiMon 3 G2 / AS-Interface Control



This document guides you through the setup of proprietary vendor specific software installed on you PC. Your supervisor may provide you with additional or alternative instructions.

The document consists of standard instructions that may not fit your particular solution. Please visit our support website for latest revisions of documentation and firmware:

<http://www.secomea.com>

**Version: 1.0, January 2012**



---

# Table of Contents

<b>Prerequisites for This Guide</b>	<b>3</b>
<b>1. Ethernet Connection</b>	<b>4</b>
<b>2. Ethernet connection via Windows XP under VMWare</b>	<b>8</b>
<b>Notices</b>	<b>10</b>

## Prerequisites for This Guide

The following guide will assist you to setup a remote and online connection to the Bihl+Wiedemann AS-i/ENIP Gateway placed on the customer site using the ASiMon 3 G2 and AS-Interface Control Tools.

This guide concentrates on a Bihl+Wiedemann device with Ethernet, but may also work with other Ethernet enabled Bihl+wiedemann devices.

Prerequisites for this guide are:

- You have an operational LinkManager installed on your Windows7 or Windows XP PC with a LinkManager certificate that allows you to connect to the SiteManager agents.
- You have the AS-i Gateway and the corresponding software installed.

You have a Bihl+Wiedemann agent configured on the SiteManager with the IP address of the device, and there is connection between the SiteManager and the device directly or via a switch.

If this is not the case, we kindly ask you to contact the person / department responsible within your own company or at the company responsible hereof.

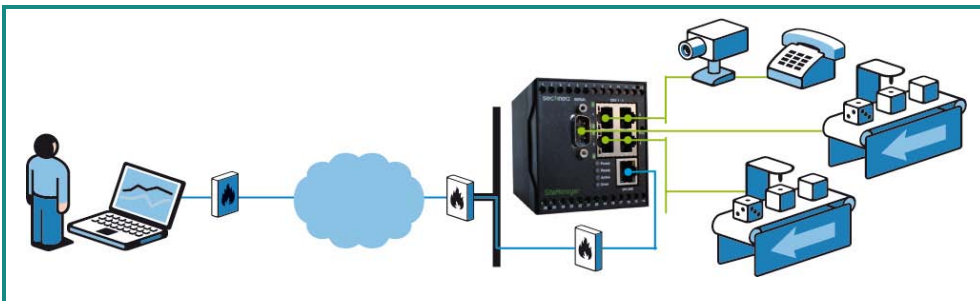
## System Overview

The communication path is as follows:

**AS-I Software** → **LinkManager** → GateManager → SiteManager → AS-i Gateway.

This guide will elaborate on the components marked with **bold**.

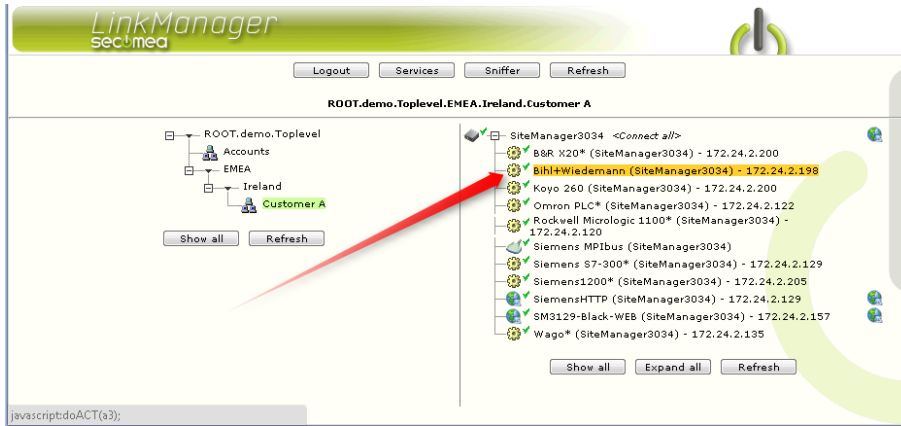
The following system overview depicts a SiteManager 3134 at the customer location.



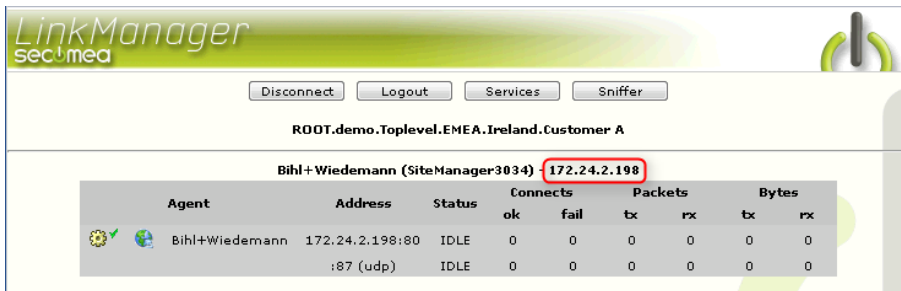
The procedures in the following apply to any SiteManager model.

# 1. Ethernet Connection

1. Login with your LinkManager and locate the agent that represents your TCPI/IP attached AS-i Gateway. Click the text (that turns orange at mouse over) to connect to the AS-i Gateway.



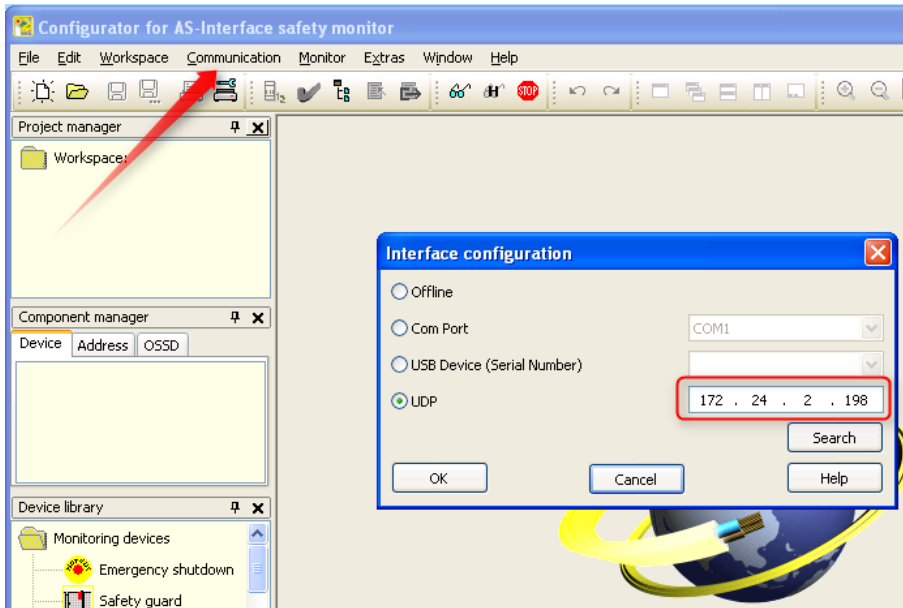
2. You will not see any activity on it yet. This only starts when you connect to the AS-i Gateway with your software (Make a note of the IP address of the AS-I Gateway, which represent the IP address that is programmed into the AS-i Gateway)



**Hint:** You are in fact now connected to the AS-i Gateway, and you could e.g. make a ping to the IP address.

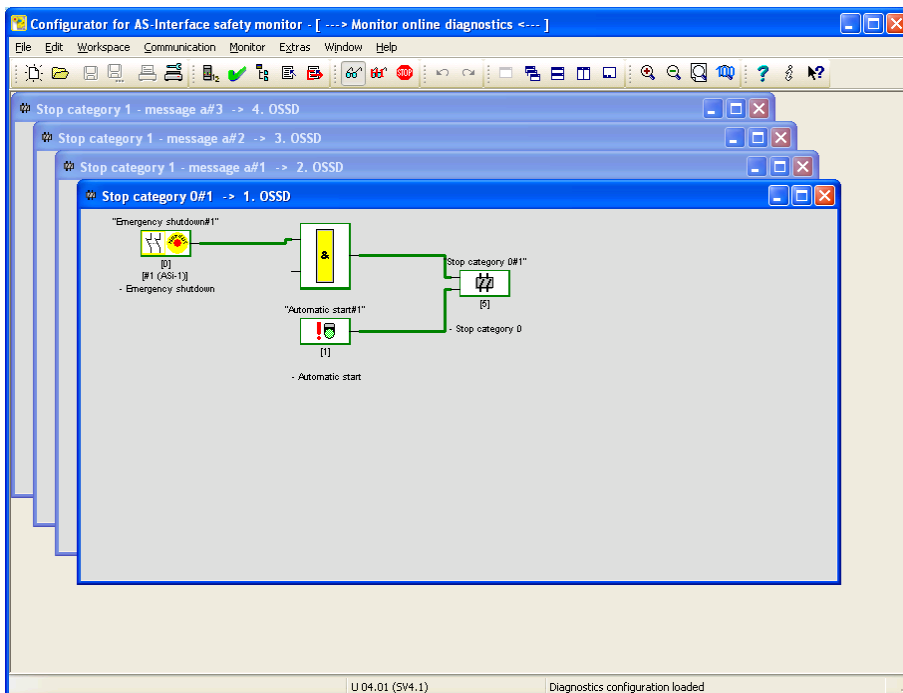
3. Start the ASiMon 3 G2 program and communicate on the IP address as you would normally have done if you were sitting in the local network with the device. The following illustrates some basic screenshots:

4. In the ASiMon 3 G2 program open your project, or create a new one, and select **Communication** → **Setup**, Select UDP and enter the IP address of the AS-i Gateway.



**NOTE:** The Search function of the Bihl+Wiedemann Interface configuration tools, will not work via the LinkManager connection. This is due to the UDP discovery from the program not being directed to available routes of the PC, but is done as a UDP broadcast (on 255.255.255.255). Instead just enter the IP address directly as explained in the following.

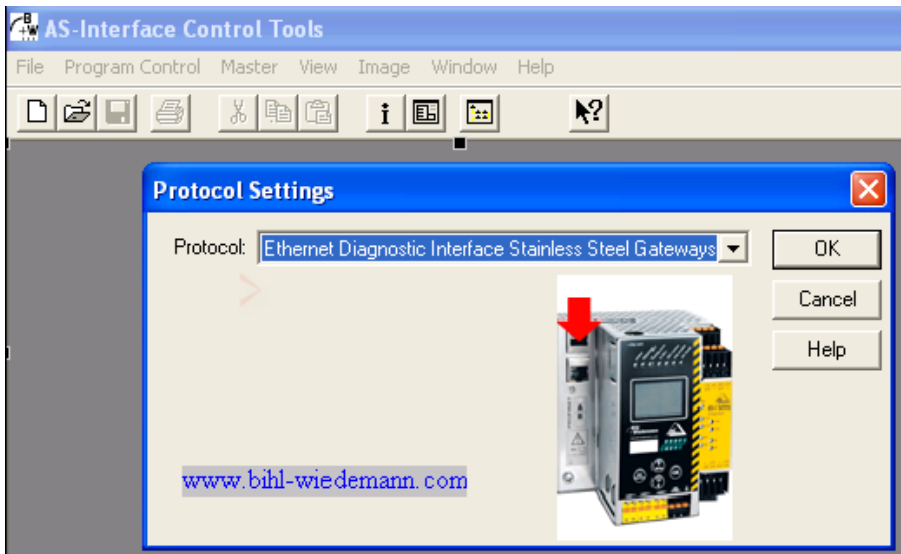
5. You are now online with the AS-i Gateway.



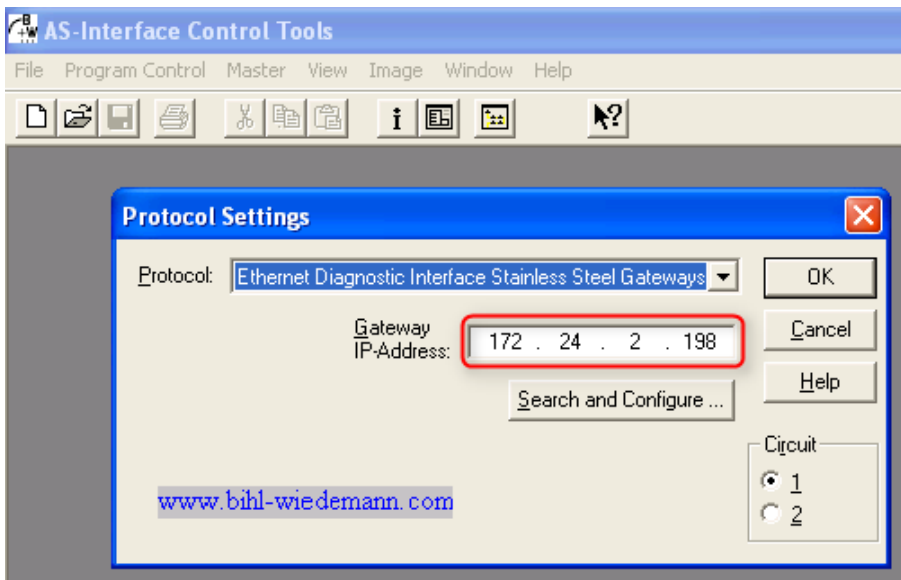
6. You can now observe traffic on the LinkManager:



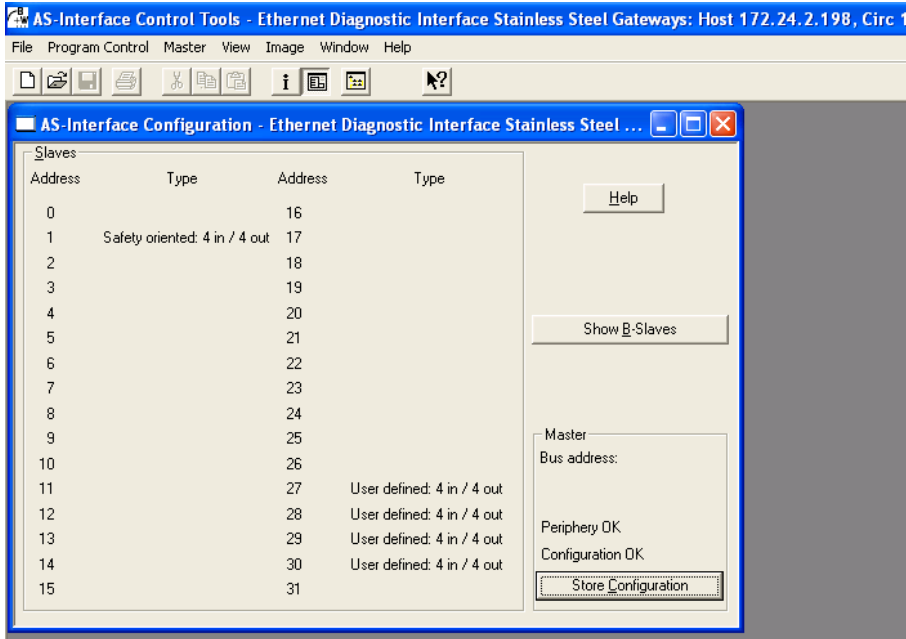
7. The exact same procedure is used for connecting with the AS-Interface Control Tools. For Protocol Settings, select Ethernet Diagnostic Interface Stainless Steel Gateways:



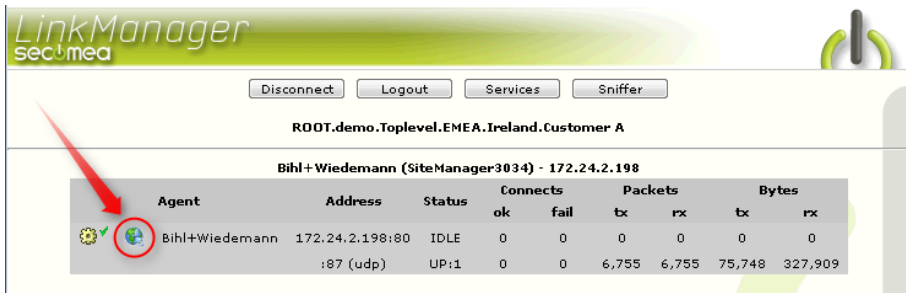
8. Enter the IP address of the AS-i Gateway. (Do not use the Search and Configure option")



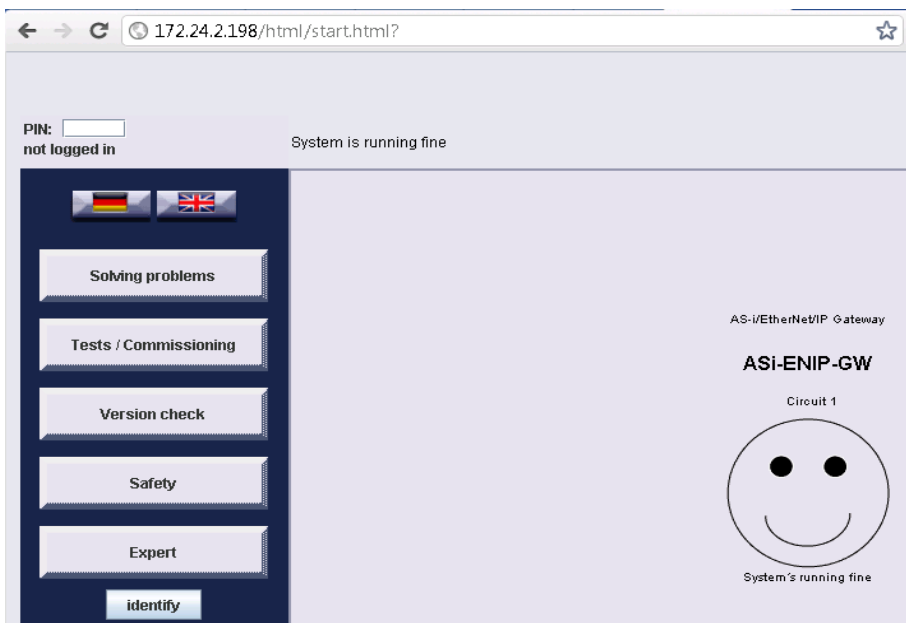
9. You are now connected:



10. You can also try to click the globe icon.



11. This will start your default web browser connected to the AS-i Gateway:



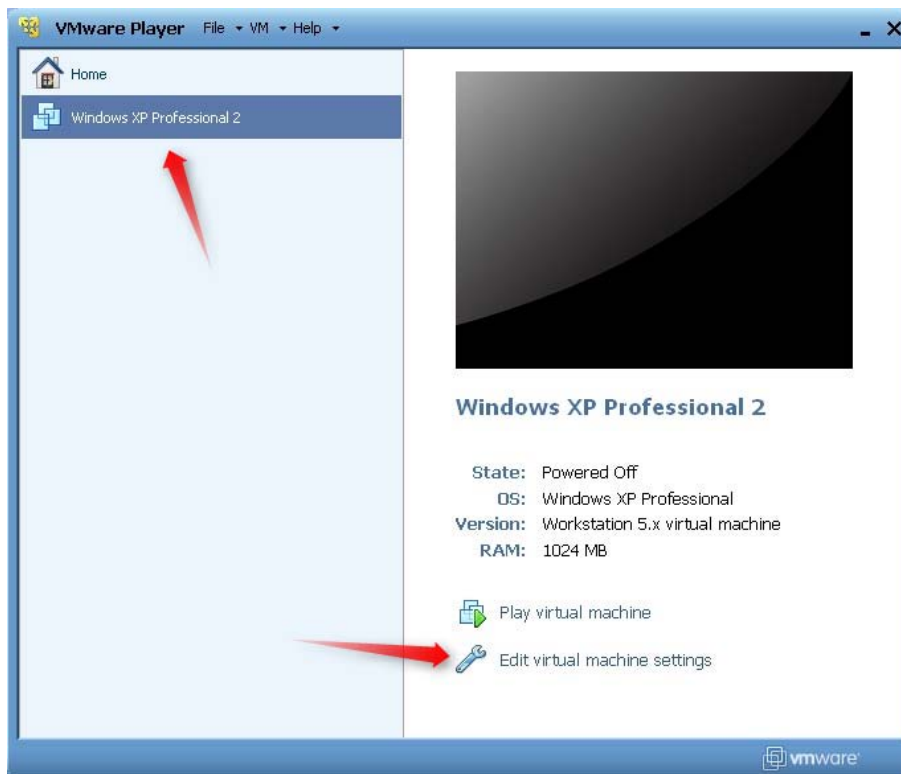
## 2. Ethernet connection via Windows XP under VMWare

You can run the AS-i Software inside a VMWare engine, to an AS-i Gateway that is Ethernet attached to a SiteManager.

**Note:** LinkManager must be installed on the hosting machine, and NOT inside the VMWare Windows XP image. LinkManager cannot run inside a VMWare virtual machine.

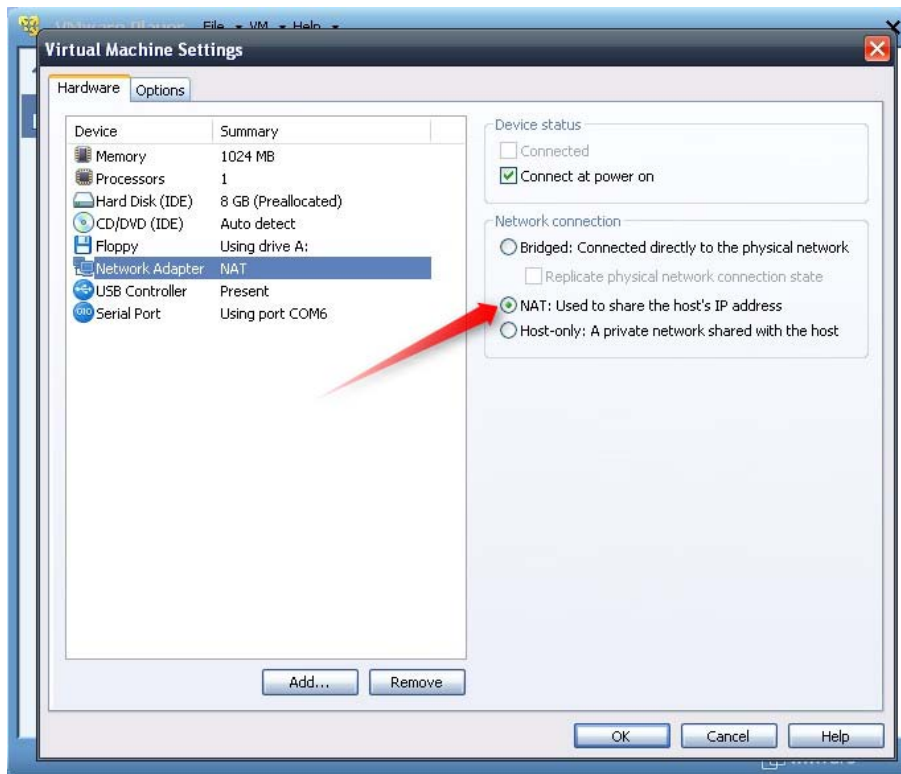
The following illustrates VMWare Player, which can be downloaded from <http://www.vmware.com/support/product-support/player/>

1. Locate your Windows XP that has Motionstudio installed, and enter **Edit virtual machine settings**.





2. Make sure the Network Adapter settings is set to **NAT**:



3. Start the VMWare engine and on the host PC start LinkManager.
4. Follow the procedure of section 1. Ethernet **Connection** to get access to the AS-i Gateway via LinkManager

---

## Notices

### Publication and copyright

© **Copyright Secomea A/S 2012**. All rights reserved. You may download and print a copy for your own use. As a high-level administrator, you may use whatever you like from contents of this document to create your own instructions for deploying our products. Otherwise, no part of this document may be copied or reproduced in any way, without the written consent of Secomea A/S. We would appreciate getting a copy of the material you produce in order to make our own material better and – if you give us permission – to inspire other users.

### Trademarks

SiteManager™, LinkManager™ and GateManager™ are trademarks of Secomea A/S. Other trademarks are the property of their respective owners.

### Disclaimer

Secomea A/S reserves the right to make changes to this publication and to the products described herein without notice. The publication of this document does not represent a commitment on the part of Secomea A/S. Considerable effort has been made to ensure that this publication is free of inaccuracies and omissions but we cannot guarantee that there are none.

The following paragraph does not apply to any country or state where such provisions are inconsistent with local law:

SECOMEA A/S PROVIDES THIS PUBLICATION "AS IS" WITHOUT WARRANTY OF ANY KIND, EITHER EXPRESS OR IMPLIED, INCLUDING, BUT NOT LIMITED TO, THE IMPLIED WARRANTIES OF MERCHANTABILITY OR FITNESS FOR A PARTICULAR PURPOSE

SECOMEA A/S SHALL NOT BE LIABLE FOR ANY DIRECT, INDIRECT, INCIDENTAL, CONSEQUENTIAL, OR OTHER DAMAGE ALLEGED IN CONNECTION WITH THE FURNISHING OR USE OF THIS INFORMATION.

Secomea A/S  
Denmark

CVR No. DK 31 36 60 38

E-mail: [sales@secomea.com](mailto:sales@secomea.com)  
[www.secomea.com](http://www.secomea.com)